



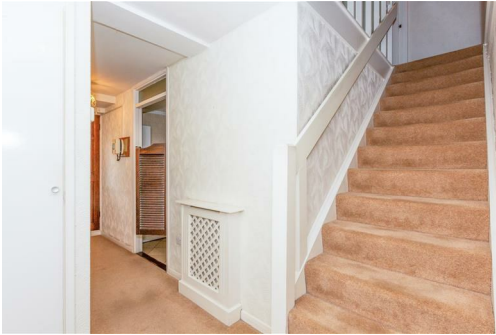
Trellis Square, London, , E3 2DR
£1,850 Per Month

Elms Estates offer to the market To Let this three bedroom split-level apartment situated on the 2nd & 3rd (top) Floors. The property borders the Tredegar Square Conservation Area and is within a Short Walk of either Bow Road or Mile End Road Tube Stations offering multiple Tube Lines. The property is also within walking distance of Queen Mary & Westfield University.

Trellis Square is currently unfurnished but there is the option to Furnish. The property is available from 3rd August.



- Exterior
- Lounge
- Kitchen
- Bathroom
- Bedroom 1
- Bedroom 2
- Bedroom 3



For Illustration Purposes Only - Not To Scale
www.lpaplus.com

Energy Efficiency Rating		Environmental Impact (CO ₂) Rating	
Current	Potential	Current	Potential
<div><div></div><div></div><div></div><div></div><div></div><div></div><div></div></div> <div>Very energy efficient - lower running costs</div> <div>(92 plus) A</div> <div>(81-81) B</div> <div>(69-80) C</div> <div>(55-68) D</div> <div>(39-54) E</div> <div>(21-38) F</div> <div>(1-20) G</div> <div>Not energy efficient - higher running costs</div>		<div><div></div><div></div><div></div><div></div><div></div><div></div><div></div></div> <div>Very environmentally friendly - lower CO₂ emissions</div> <div>(92 plus) A</div> <div>(81-81) B</div> <div>(69-80) C</div> <div>(55-68) D</div> <div>(39-54) E</div> <div>(21-38) F</div> <div>(1-20) G</div> <div>Not environmentally friendly - higher CO₂ emissions</div>	
67	75	63	73
England & Wales		England & Wales	
EU Directive 2002/91/EC		EU Directive 2002/91/EC	